



Tennessee HCV Clearance Cascades

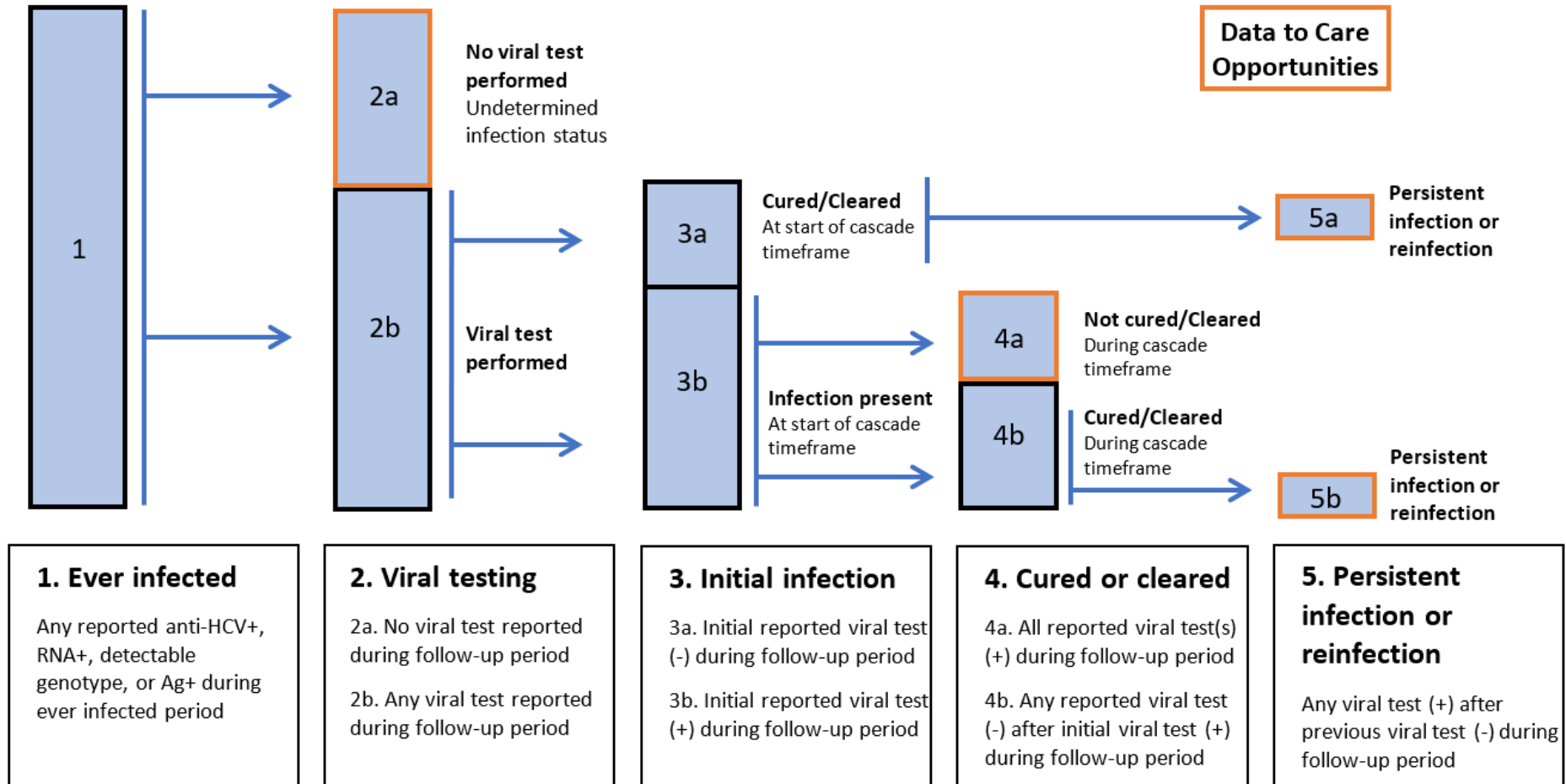
NASTAD Hepatitis Workgroup



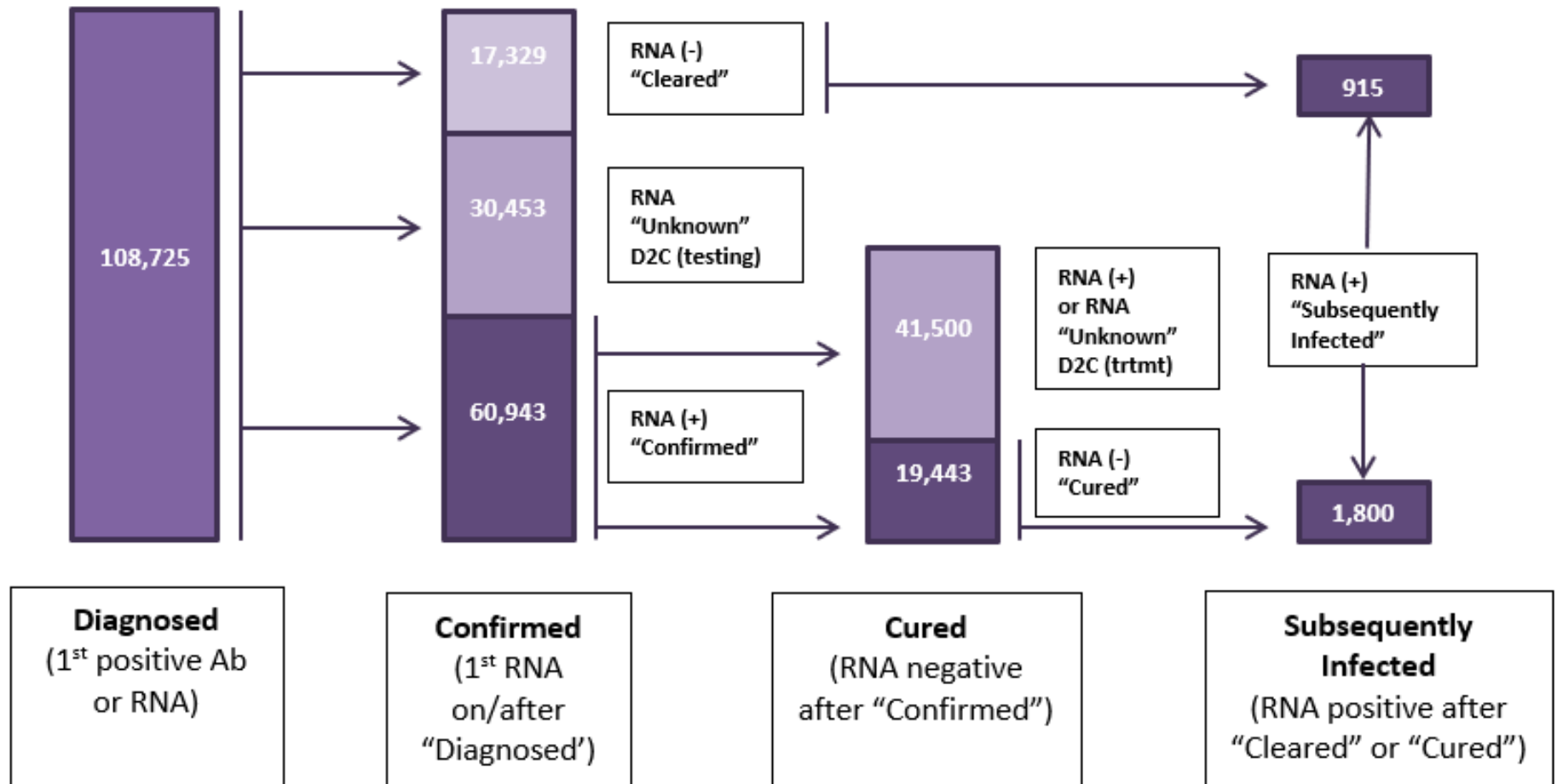
Clearance Cascade

1.0

Laboratory-based HCV Clearance Cascade



Tennessee HCV Clearance Cascade 2016-2021

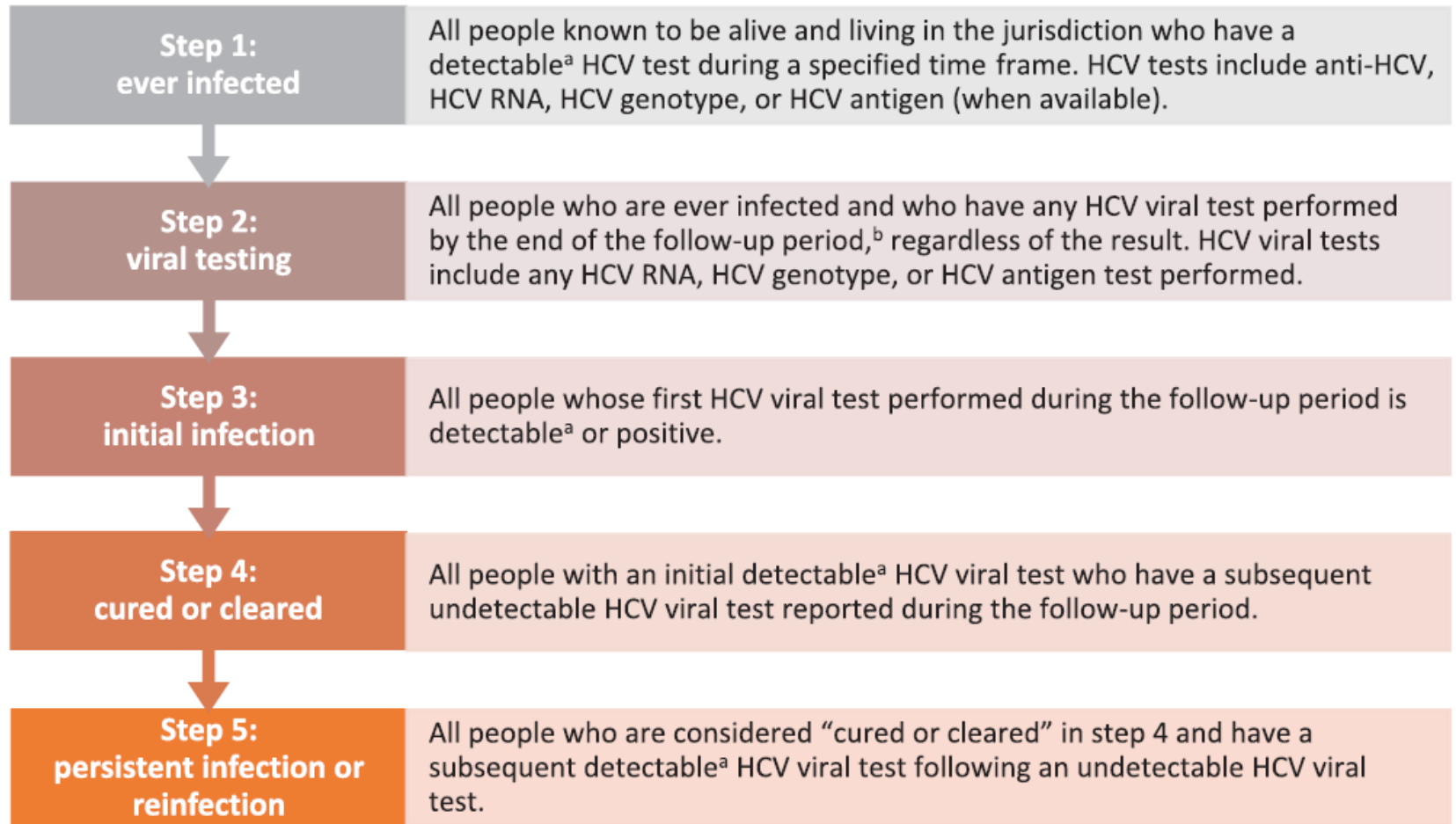


D2C: Data to Care



Clearance Cascade 2.0

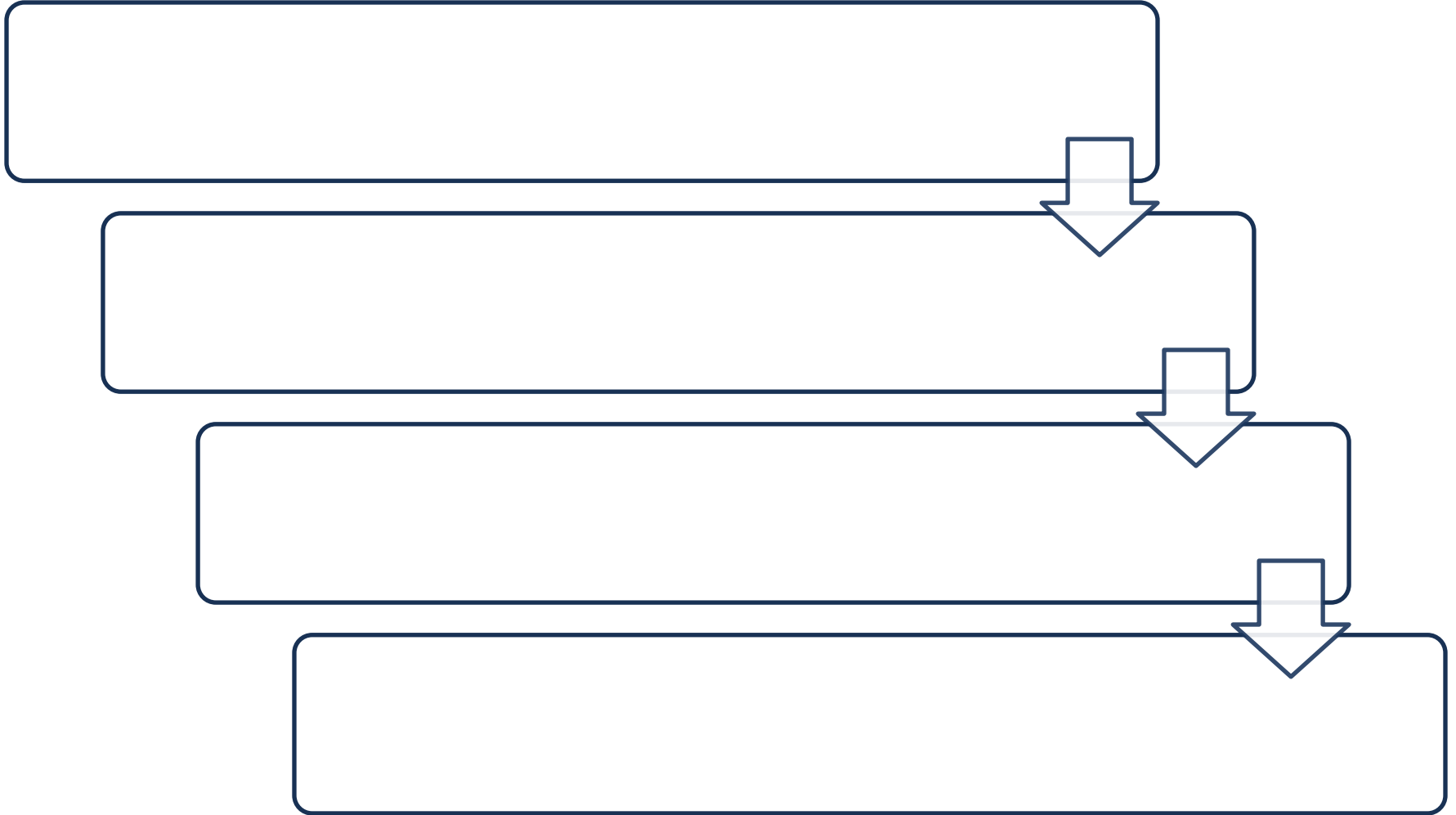
HCV Clearance Cascade Definitions



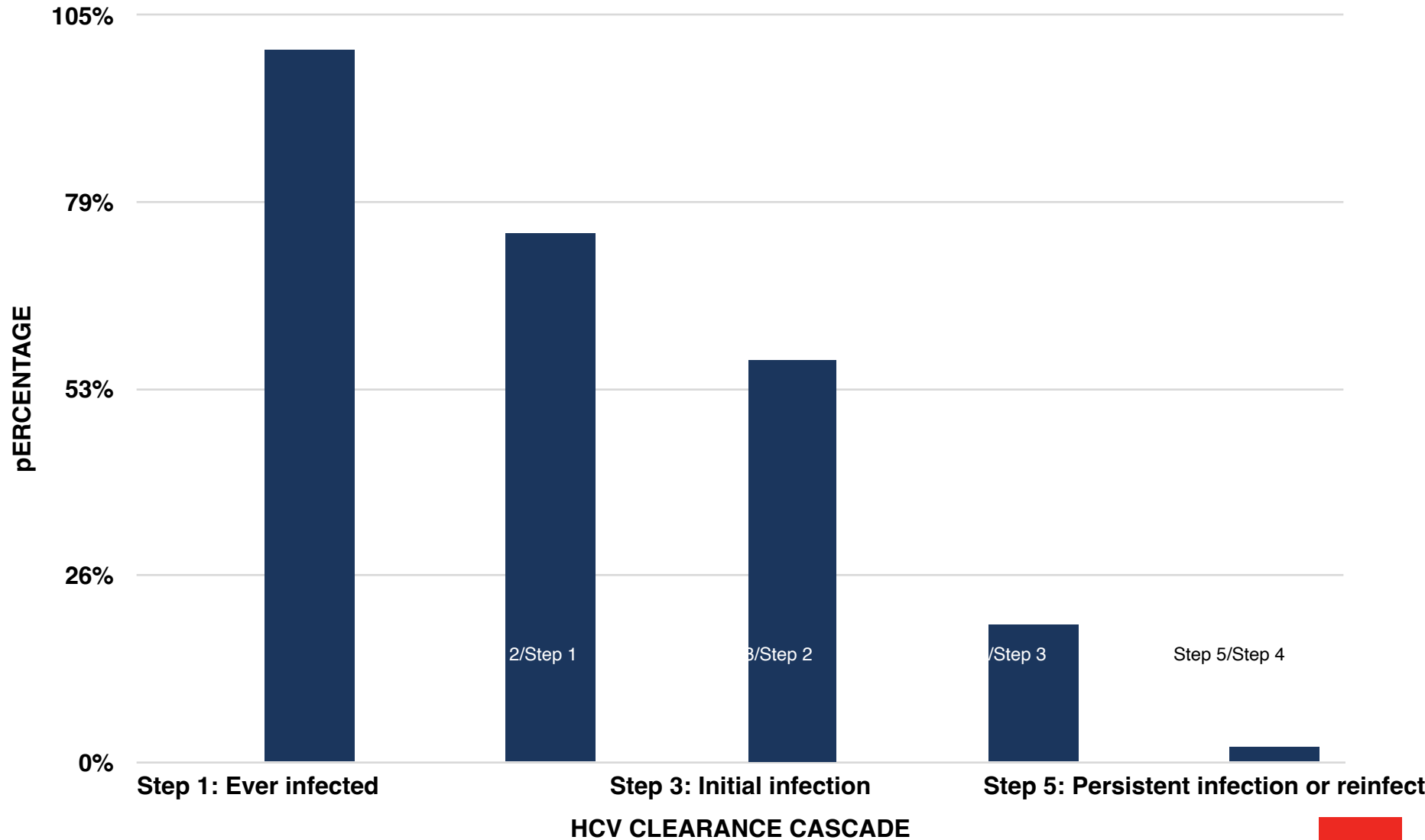
^a A detectable HCV viral test includes laboratory results that are detectable but below the limit of quantification.

^b The follow-up period begins at the start of the time frame and extends 1 year beyond the time frame specified in step 1. This provides at least 1 additional year for people to have confirmatory viral testing, establish care, initiate and complete treatment (often 8-12 weeks), and complete posttreatment testing, which usually occurs 12 weeks after treatment completion.

Tennessee Clearance Cascade 2016-2022



Tennessee Clearance Cascade 2016-2022

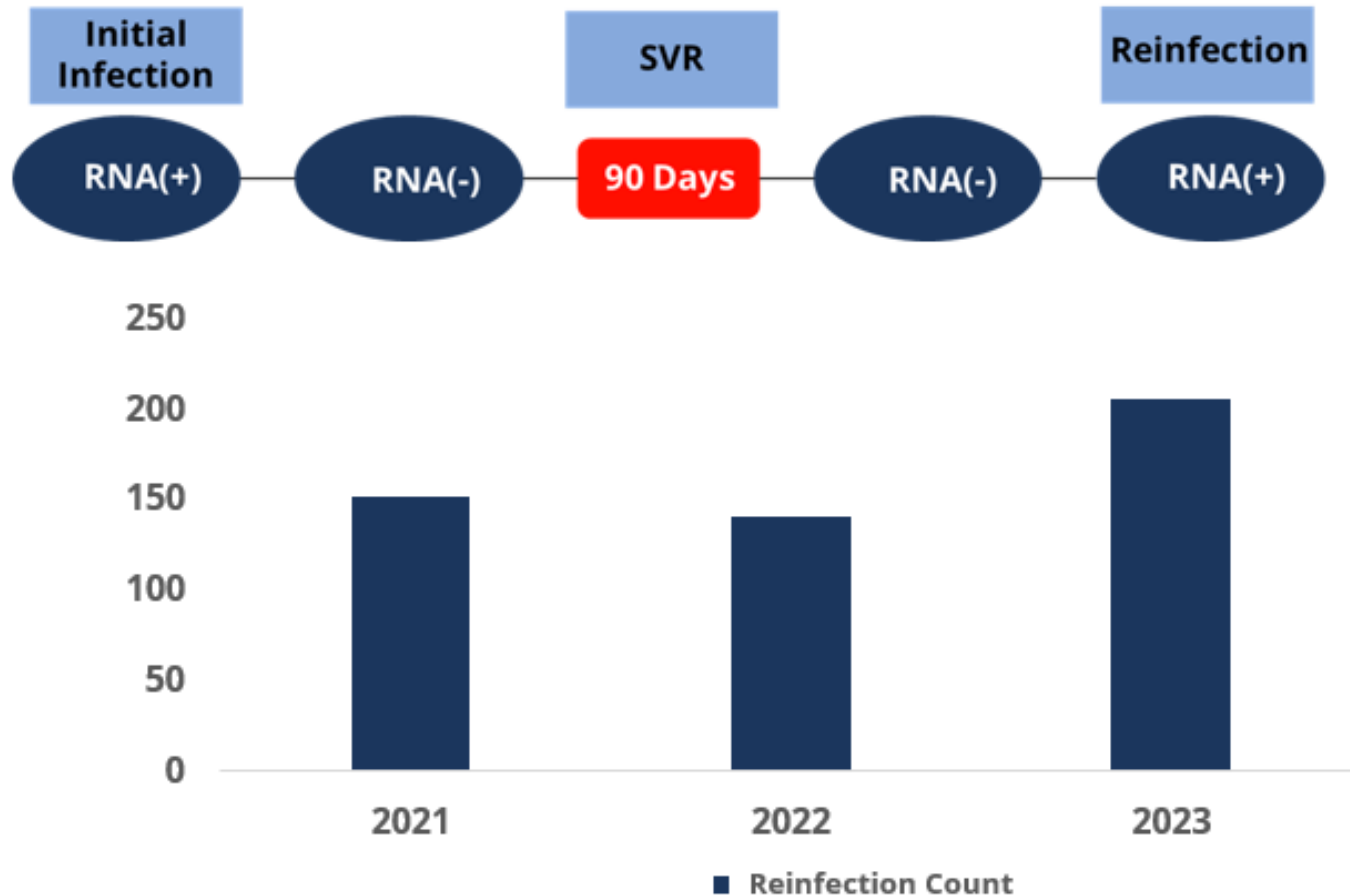




Additional Surveillance Activities

HCV Reinfections

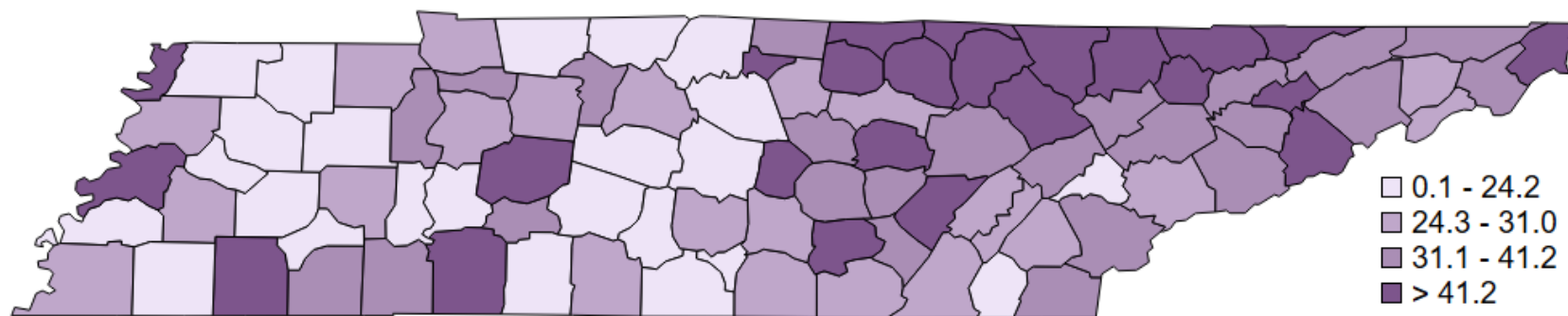
- Currently we use a strict definition of HCV reinfection
- These investigations in NBS only, not sent to CDC



Persons Living with HCV

114,729
people were living with HCV in 2022

Rates of Persons Living with HCV (per 1,000 population) by County, Tennessee, 2022



State Average: 38.3 per 1,000 population

Thank you!

Questions?

Heather.Wingate@tn.gov