



ANNUAL MEETING²⁰²⁵

Integrated Cluster Detection & Response (CDR) Plans

Rey Cordova
Manager, Capacity Building
Affinity Session

Session Overview

- CDR activities are the foundation of the EHE Respond pillar, and designing an integrated CDR plan is essential for program implementation
- Discussion: This session was created to provide a space to discuss best practices and real-world examples of integrated (HIV/Hepatitis) CDR plans with peers and allow time for informal workshopping
- Resource Sharing: NASTAD has put together several resources that can help support your Integrated CDR Plans

Discussion

- What, if any, syndemic approaches have you integrated into your CDR plan/activities?
 - What new or strengthened partnerships were necessary for this, and do you have any partnership success stories to share?
 - Has your HD incorporated areas like DUH and overdose, STI, related social determinants of health, etc. (and if so, how)?
- What are some challenges that your jurisdiction has faced when creating its CDR plans?
 - Were you able to address these challenges?
- What are some successes that your jurisdiction achieved when creating its CDR plans?
 - What resources do you feel contributed to this success, and how might others be able to access or adapt these resources?
- What kinds of engagement or input has your HD involved community members in around this work?
- Have any of your HDs had to put your plan into action for a recent cluster? How did that experience go, and did you have to make modifications to your plan based on that?

Resources: CDR Planning and Policy

- [Developing an HIV Outbreak Response Table-Top Activity: A Starter Kit | NASTAD](#)
 - This resource provides sample materials, considerations, and resources to assist health departments with developing and implementing a tabletop activity in their respective communities. The starter kit includes questions to discuss during the planning process, groups of stakeholders to invite to participate, sample slides, and other helpful considerations for the successful activity implementation. Items in this kit are samples and should be adapted to meet the local community's needs
- [NASTAD Recommendations for Cluster and Outbreak Detection and Response & Molecular HIV Surveillance | NASTAD](#)
 - Under the leadership of the NASTAD Board of Directors Program and Policy Committee, NASTAD staff and members developed recommendations to implement CDR and MHS strategies in ways that reflect the values and priorities of NASTAD, health departments, and community members. The recommendations are the result of feedback collected from NASTAD members.

Resources: CDR Community Engagement & Education

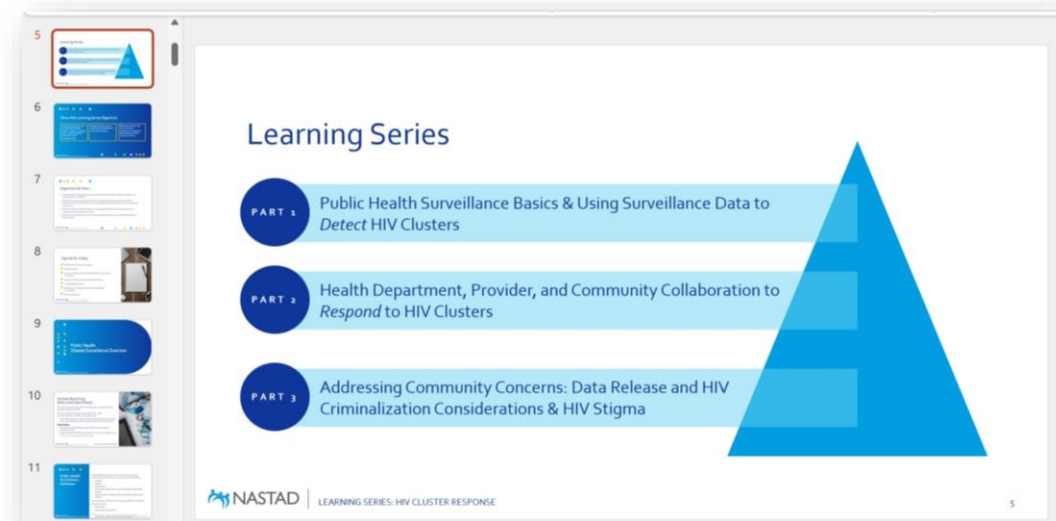
- [Southern Region Cluster Detection and Response \(CDR\) Video Series | NASTAD](#)
- [Foundations of HIV Cluster Response: Community Partner Education Template | NASTAD](#)



HEALTH DEPARTMENTS



COMMUNITY-BASED ORGANIZATIONS



Open Discussion



Thank you!

Contact Information:

Rey Cordova, MSW, LSW

Manager, Capacity Building

Rcordova@NASTAD.org