



Enhancing Health Equity Among Diverse North Dakota Populations

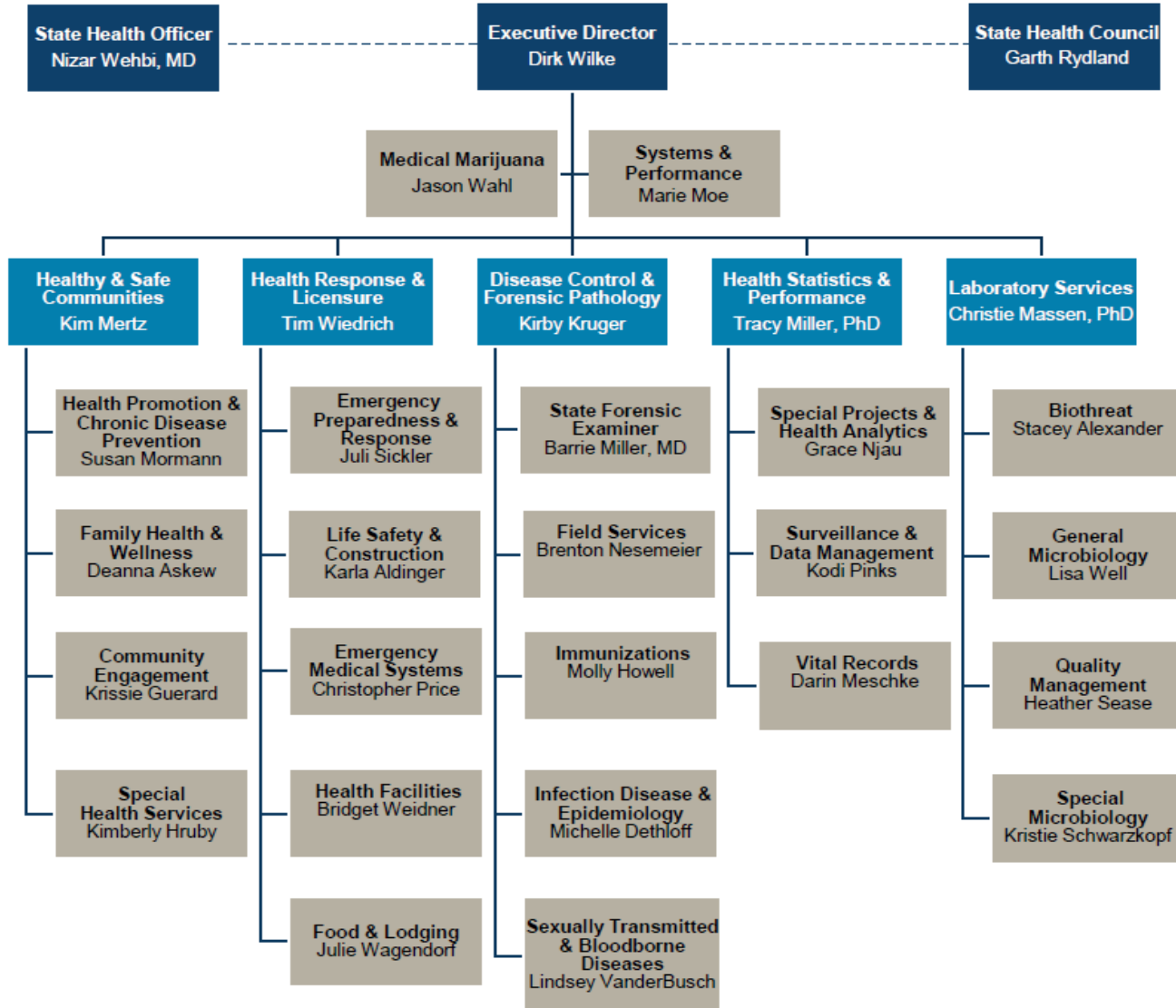
Jorden Laducer, Community Engagement Special Populations Coordinator

Sonya Abe, Community Engagement Tribal Health Liaison Lead



Health & Human Services

Public Health Division



North Dakota Department of Health and Human Services (HHS) Goal: Help North Dakota become the healthiest state in the nation

We'll focus on three actions to accomplish this:

Invest in the
FOUNDATIONS
of well-being

-  Economic Health
-  Behavioral Health
-  Physical Health

Ensure everyone has the
opportunity to realize
their **POTENTIAL**

-  Strong, Stable Families
-  Services Closer to Home
-  Early Childhood Experiences
- Efficiency Through Redesign
- High-Performing Team

Give everyone the
OPPORTUNITY to
decide to:

-  Be Healthy
-  Be Active
-  Find Disease Early

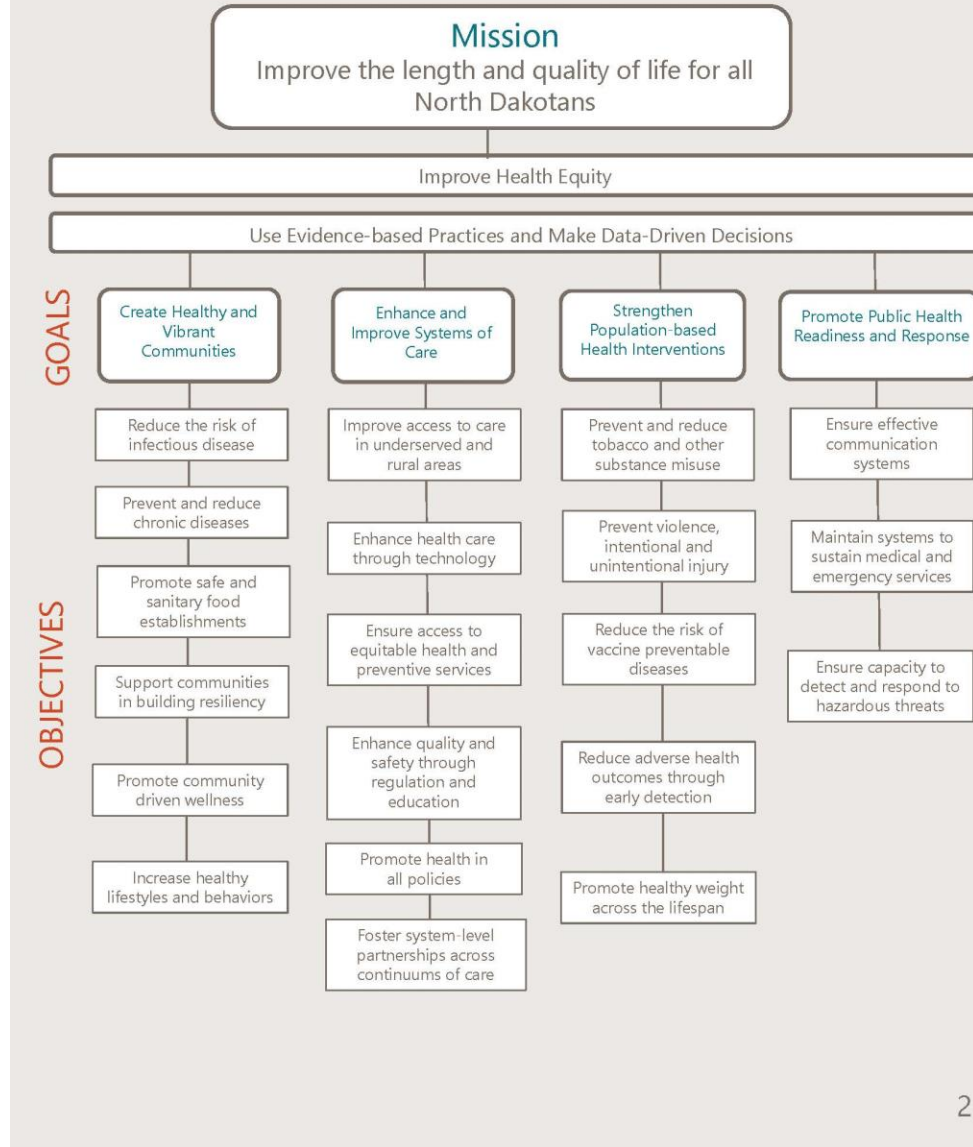
Community Engagement Unit

The mission of the Community Engagement (CE) Unit is to understand and reduce health disparities among all North Dakotans. The primary goal is to work alongside North Dakota communities in addressing health-related needs to reduce disease rates by providing opportunities for interventions and improving access to health care. This will ensure that all North Dakotans have the ability to reach their optimal health.

Healthy and Safe Communities (HSC) Section

Community Engagement Unit





Advisory Boards

New American/Foreign Born/Immigrant (NFI)



- The NFI Advisory Board members represent a diverse cross-section of individuals and organizations with a tie to NFI communities

BeYOU LGBTQ2S+



- 18+
- Ally, provider and/or members of the LGBTQ2S+ community

Youth (YAB)



- 15-21 years of age
- Provide insight ensuring youth perspectives are incorporated in planning and decisions for the state, as well as forming community partnerships

Tribal Health



- Led by North Dakota State University American Indian Public Health Resource Center

Tribal Sovereignty

More than 300 treaties and over two centuries of federal laws recognize Indian tribes as domestic, dependent nations with degrees of sovereignty existing within the confines of the United States.

North Dakota American Indian Population

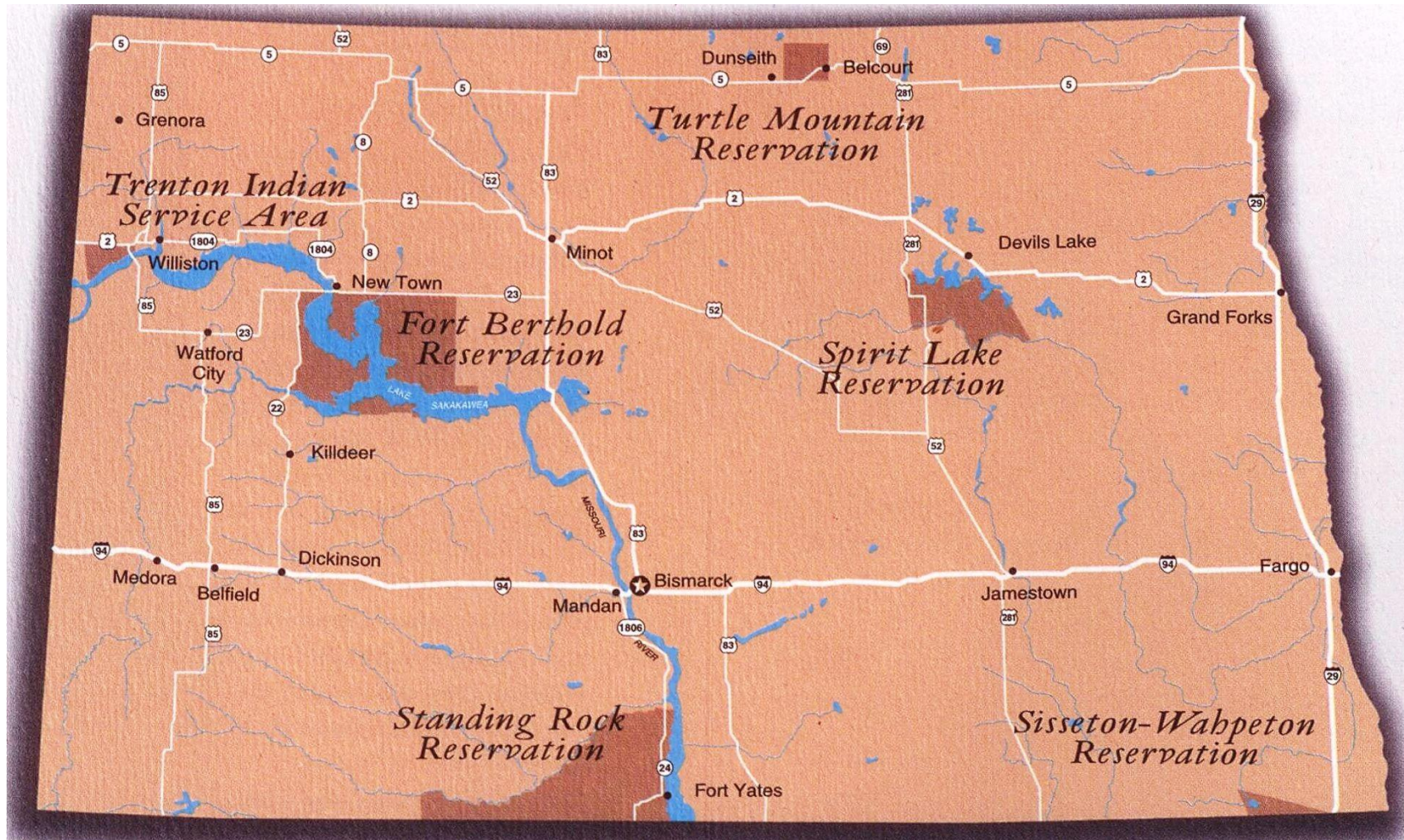
- About 39,000 Indigenous people live in North Dakota
 - Largest minority population in ND (5.3%)
- Rural counties – 70.5% of AI/AN population
- Urban counties – 29.5% of AI/AN population

ND Tribal Areas



Aerial View of the Standing Rock Native American Reservation in North and South Dakota

- Mandan, Hidatsa and Arikara Nation (MHA)
 - Also called the *Three Affiliated Tribes*
- Standing Rock Sioux
- Spirit Lake Nation
- Sisseton-Wahpeton Oyate Nation
- Turtle Mountain Band of Chippewa Indians
 - Tribal Community: Trenton Indian Service Area



ND Tribal Areas

ND Tribal Areas - History

MHA Nation

- Est. in 1864
- Reservation boundaries est. in 1870

Spirit Lake Nation

- Est. in 1867
- Reservation boundaries est. in 1867

Standing Rock Nation

- Est. 1873
- Reservation boundaries est. in 1889

Sisseton Wahpeton-Oyate Nation

- Est. in 1867
- Reservation boundaries est. in 1867

Turtle Mountain Band of Chippewa

- Est. in 1910
- Reservation boundaries est. in 1975

Trenton Indian Service Area

- Est. in 1975.



Sonya Abe (Lead)

- Tribal Health Liaison
- Primarily assigned to the Mandan, Hidatsa, Arikara Nation
- Secondary to Standing Rock Nation

Cheyenne Smith

- Tribal Health Liaison
- Primarily assigned to Standing Rock Nation
- Secondary to Mandan, Hidatsa, Arikara Nation





Luticia Mann

- Tribal Health Liaison
- Primarily assigned to Spirit Lake and Sisseton Wahpeton Oyate Nations
- Secondary to Turtle Mountain Band of Chippewa Nation

Hunter Parisien

- Tribal Health Liaison
- Primarily assigned to Turtle Mountain Band of Chippewa Nation
- Secondary to Spirit Lake and Sisseton Wahpeton Oyate Nations



ND American Indian Health Disparities

Mortality

- AI/AN is ND's largest minority population
- Second highest mortality rate of all races
 - Diabetes
 - Cancer
 - Heart disease
 - Chronic Obstructive Pulmonary Disorder (COPD)
 - Liver Disease
 - Accidents

Race	Population	Percent of Total Population
White	656,584	88.3%
AI/AN	39,103	5.26%
Black	24,349	3.27%
Asian	12,313	1.66%
Native Hawaiian and Other Pacific Islander	1,194	0.16%
Other	10,002	1.35%
Total	773,344	100%

Tribal Partnerships



- Organizational
- Urban
- Tribal

Making Tribal Partnerships Possible

- Communication
- Cultural Awareness
- Respect and Understanding



Tribal Projects



- Tribal Health Directors
- ND HHS Medicaid
- Community Action Partnership (CAP)
- AIPHRC with Tribal Health Liaisons, giving updates and sharing of upcoming events and initiatives
- American Health Association (AHA)

Tribal Projects



- Native American Training Institute (NATI)
- Feedback to ND Medicaid Tribal Liaison regarding ND Medicaid 101 training
- Data Use Agreement with Tribes and ND HHS
- Local Field Epidemiologists
- Systems of Care – ND HHS Behavioral Health

Health Equity Ambassador Program

- Three North Dakota universities and one Tribal college
- Two student ambassadors to one faculty supervisor
- Two events organized and implemented each semester
 - Address COVID-19 disparities and health equity
 - Customized to student passions

Ambassador Testimony



"Not all individuals have a car or money to go to a blood donation site. It was great to host an event that benefited the community (with a huge blood shortage) and individuals on campus to have an easy and convenient opportunity to donate blood if they so wished."

-Shaena Richard, *Health Equity Ambassador*

Health Equity Training

Health Equity Training Series



Person-First and Inclusive Language
Ruth Nwatu

NORTH
Dakota | Health & Human Services
Be Legendary.



- In 2023, CE staff did over 100 trainings and presentations in the state.
- Topics:
 - Health Equity
 - Bias
 - Effective Communication
 - Person-First and Inclusive Language
 - American Indian
 - LGBTQ2S+
 - New American/Foreign Born/Immigrant
 - Persons Living with Disabilities and Older Adults
 - National Standards for Culturally and Linguistically Appropriate Services (CLAS)

https://www.train.org/cdctrain/training_plan/6690

Local Public Health – Health Equity Strategic Planning

North Dakota's 28 Local Public Health Units (LPHUs) created data-driven Health Equity Strategic Plans for the communities they serve:

- LPHUs cover services to the 53 counties of North Dakota
- OT21-2103 allowed implementation of activities from these plans
- Social vulnerability indexes were sent to each LPHU
 - LPHUs worked with Immunization and Community Engagement Teams

North Dakota Community Apps



- North Dakota's population is 48% rural
- Living Local
 - **83** live apps in rural communities
 - Population of communities with Living Local App: **103,268**
 - ~1/3 rural ND population
- Native Reach App
 - Spirit Lake
 - Turtle Mountain Band of Chippewa Indians
 - **27** apps in **17** states



Grant Opportunities

- Tribal
 - \$80,000 provided in grant opportunities with North Dakota's five Tribal Nations
 - Mini-grant opportunities for rural and urban Tribal organizations
- New American/Foreign Born/Immigrant
 - COVID-19 testing and vaccination events
 - Addressing isolation from COVID-19 in youth
- Assisting in COVID-19 testing and vaccination events Statewide
- Preventative health in the aftermath of COVID-19
- 1,741 partnership collaborations* in 31 months of grant
 - Utilized 937 existing
 - Expanded 431
 - Created 495



*Could have repeats from quarter to quarter, partnership categorization was subjective, could have duplicates of partnerships among individuals; as of December 2023.



Thank you!

www.hhs.nd.gov/health/engagement

NORTH
Dakota
Be Legendary.

Health & Human Services